

How to set up (really), the new Nikon WT-2A

June- 2005 Cory Shubert www.pixelagogo.com

When Nikon came out with the WT-1, it was heralded as a breakthrough for digital photographers. The only problem was, you had to be an IT LAN/WAN person to get the thing to work. Not what most photographers are or want to be.

Then, Nikon upgraded things with the WT-2A, transfer speed to say the least, and improved the usability and how it connects to a network.

I will attempt to show you how to get it up and running in "**Infrastructure setup**" and not Ad-Hoc, in as least amount of time as possible. While there are many different types of configurations possible, with Mac and PCs, routers and APs as well as network security and SSIDs, I think what I show will help at least most get things going.

Ok, let's rip this sucka open...

The Box:



Other than the WT-2A unit and a new end cap and antenna, this is what you get inside for around \$650.00 USD. My advice, stick the manual where the sun don't shine... or at least a bookshelf. Once you get it set up, you won't want to have to look at this thing again.

First Screen in the Set Up, Step 1



Make sure that you switch your output from Mass Storage to P or PTP. Once that is done move on to the Wireless LAN set up window.

Step 2



You want to make sure your Wireless LAN system is set to OFF while you go through this set up process.

Step 3

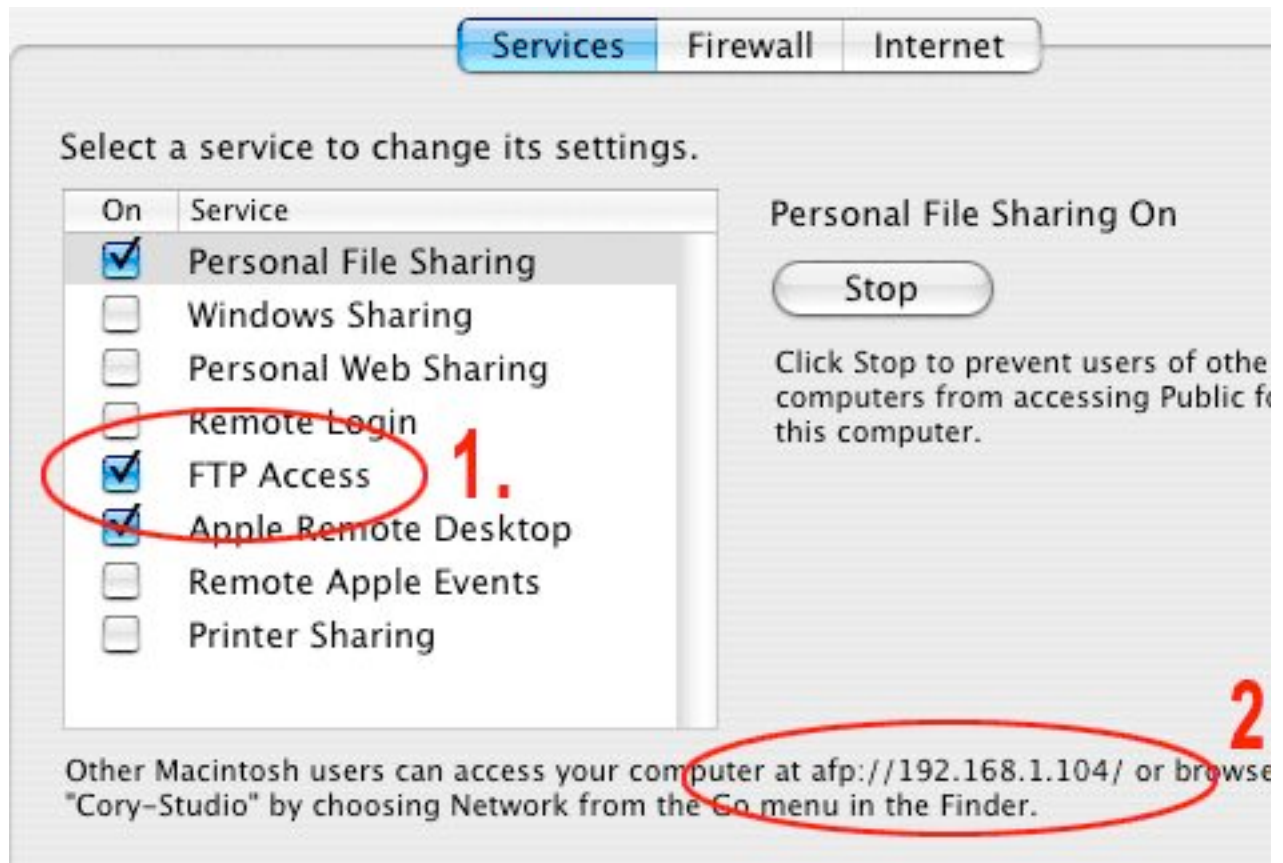


Now starts the fun... Go to MODE and select FTP. We are not going to configure PTP/IP because I don't use Nikon Capture AND NEVER WILL. No slam to those of you who find it a benefit, just don't count me as one. Anyway, this is going to tell the WT-2A to talk to the FTP server on your Mac that we are going to configure next.

PTP/IP Update: Thomas Sapiano is on the verge of releasing an app which will make using PTP/IP possible without using Nikon's Capture software.

You can get more info on this via:
Thomas Sapiano,
support@pixagent.com

Step 4



My advice is to have this screen open and in the background, cuz it will make one of the steps down this path easier.

It is in System Preferences/Sharing. Here you want to make sure your FTP Access is ON (number 1) and that you can see your IP for this computer in number 2.

Step 5



Now we will set up a custom bank or location for this connection. Under settings, go to Network Settings...



and here you can select a bank and rename it.

Here you can see the two I have set up now.



and then you can set easy to remember names for each different location. Sweet!

Step 6



After all this, it is time to push the CONNECTION WIZARD button and the magic will start to really happen.

Now, here is where I say the part about my set up. I don't have WEP or any other encryption going... I know I know, so sue me. Anyway, this will basically walk you through a simple process that depending on how your router or network is configured, should have you up in but a few more steps.

Remember, you click ENTER after each step to go on to the next one.

Step 7



Ok, now the Wizard is looking for all wireless networks it can find. Here it has found my studio setup, Shubert54g, as well as someone else's... don't know who they are but must be close. The reason you see two Shubert54g's is because I have a repeater to cover all the area I need covered...

Hmm, wonder if I can suck off some bandwidth from this other network... just kidding.

Step 8



And here it is asking if it can just use the auto setting to get the TCP/IP of your network.
I say, if it can be that easy, then do it...

Step 9



Ok, here is why I had you keep that Sharing window open in the background... you did do that didn't you? Come on, make me proud.

Anyway, here is where you will type in the FTP server IP that is showing in number 2 of the layout above. Go to the next screen and type it in.

NOTE: If your computer is configured to use dynamic IP addresses the FTP server address may change... your base station leases an address to the computer and if the power were to fail, it might kick out a new IP to it.

Not a big deal, but if for some reason your laptop isn't finding the WT-2A, this might be a good thing to check!



Take your time, that jog wheel can be very temperamental and you may have to delete and re-key in the numbers.

HINT. To delete an entry, hold the button that is the rectangle with the 4 black squares in it on the left of the back of the camera, then use the arrow key pad on the right to go to the one to delete and then hit the trash icon, simple

Step 10

Here you enter your User ID for your computer, you know, the one you use if you add any applications or do anything that requires admin ability. Please tell me you are not just using Admin/Admin, that would make me cry.

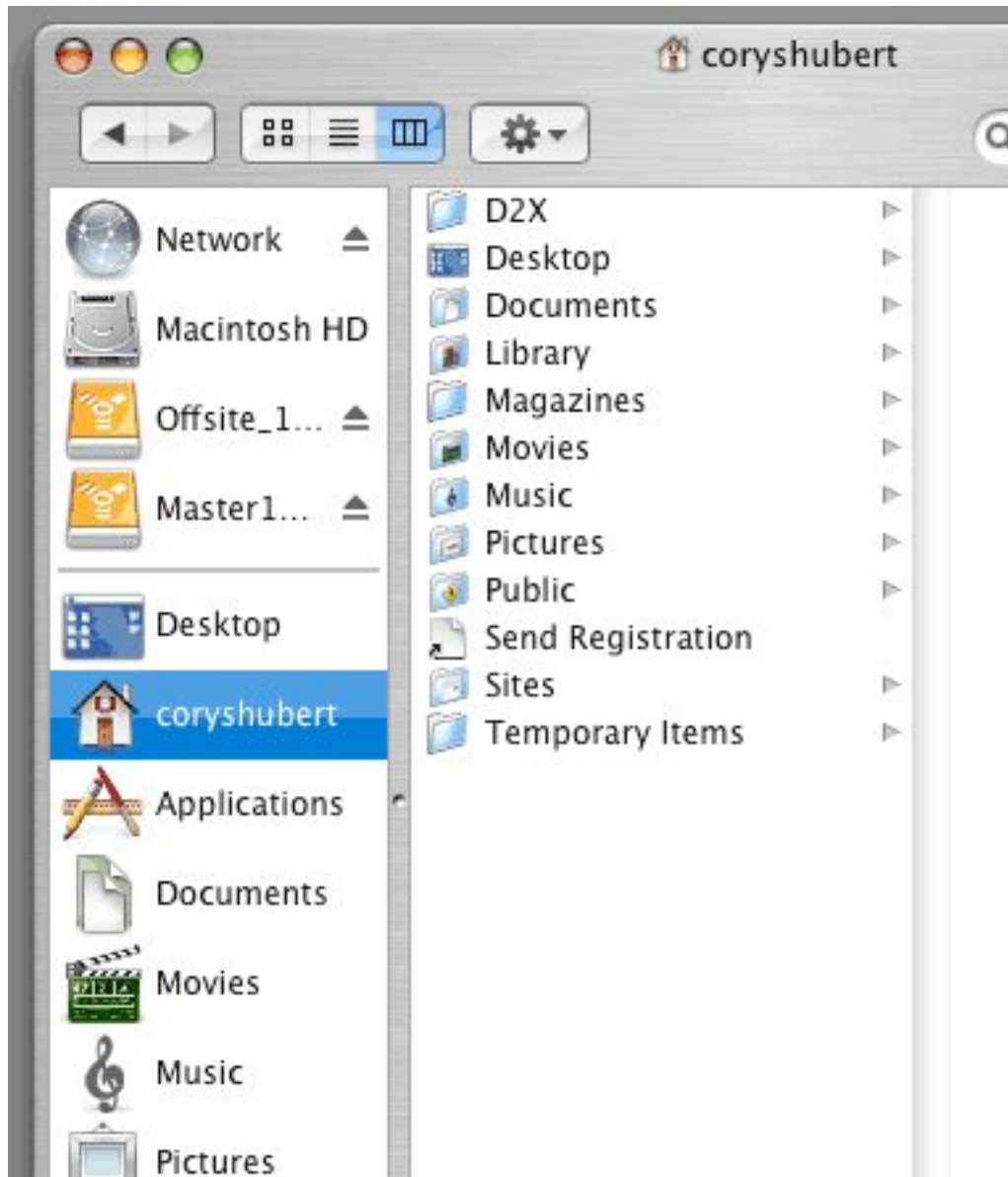
If not, then use the User ID of the home account you want to use when you shoot as well as the password here.

Step 11

Now you can pick where you want your images to show up on your computer. You can use the default Home folder, but that can get messy if you do this a lot.

Remember, the simple thing is to just use the Home Folder. OSX will default to the user account's home directory. The OS X FTP server will generate an error if the folder doesn't exist so you need to create the directory in the same place.

You have been warned!



I created a folder in the root of the user called D2X, duh, and that is my spot that I want the images to upload to.

Step 12



After all this, when you click ENTER, you will see this (hopefully) which tells you things are good to go. Rock on.

Step 13



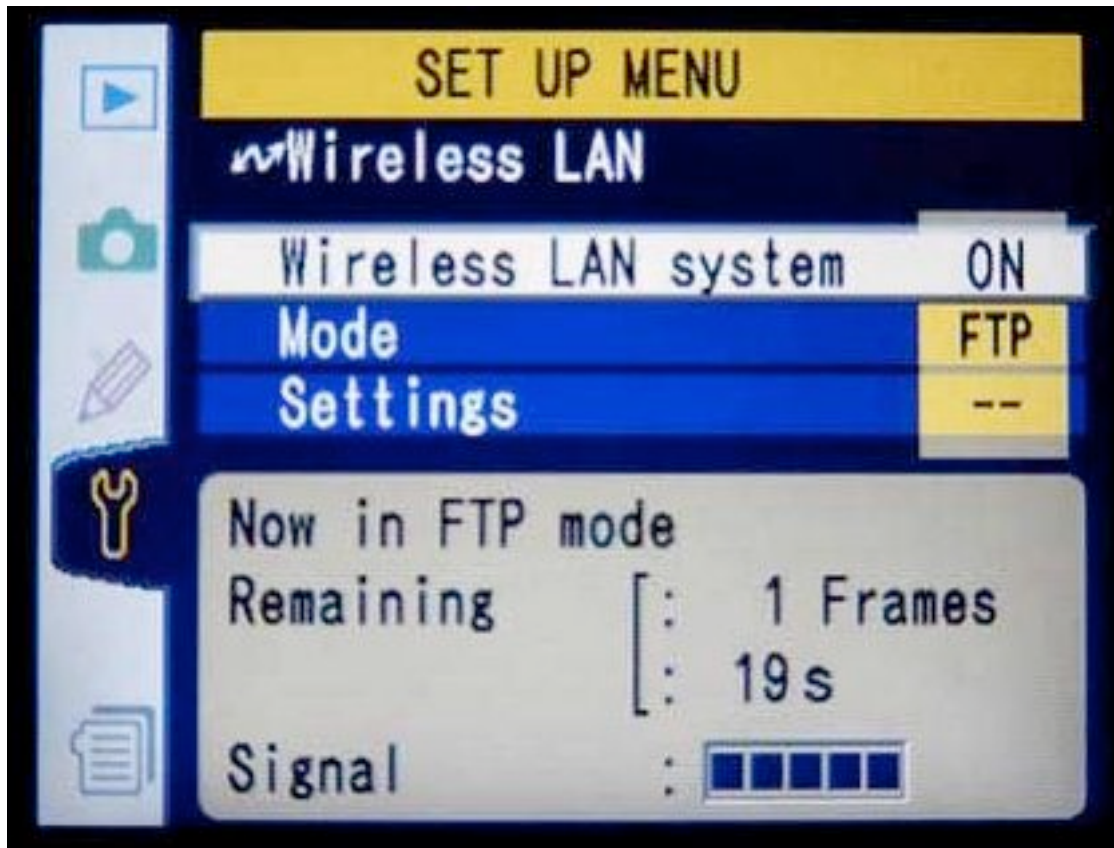
Now we get to turn on the Wireless LAN system. Select it on top and turn it on to activate the unit and get it ready to send.



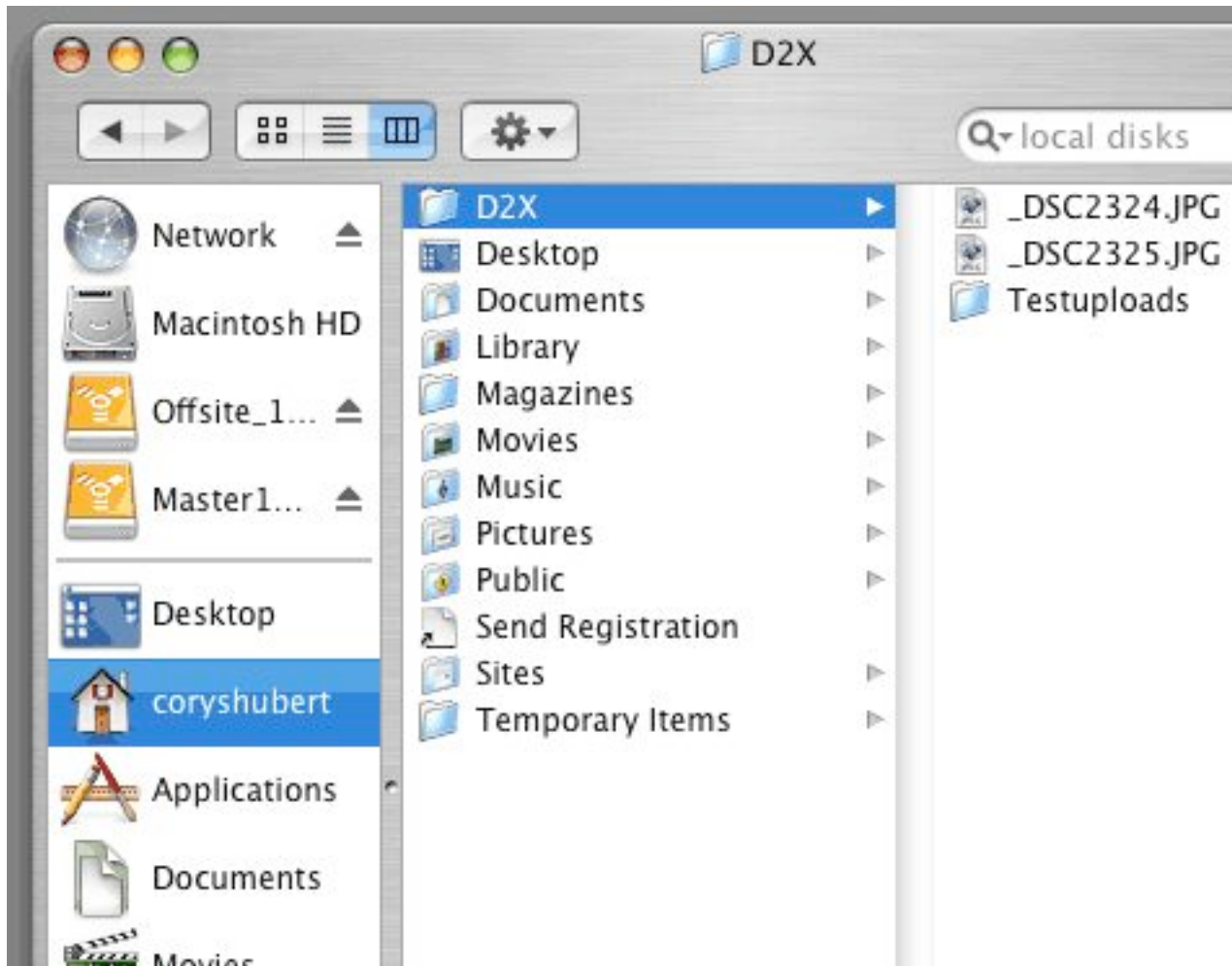
We see that we are in FTP mode and ready to transmit. Now you have to shoot something...



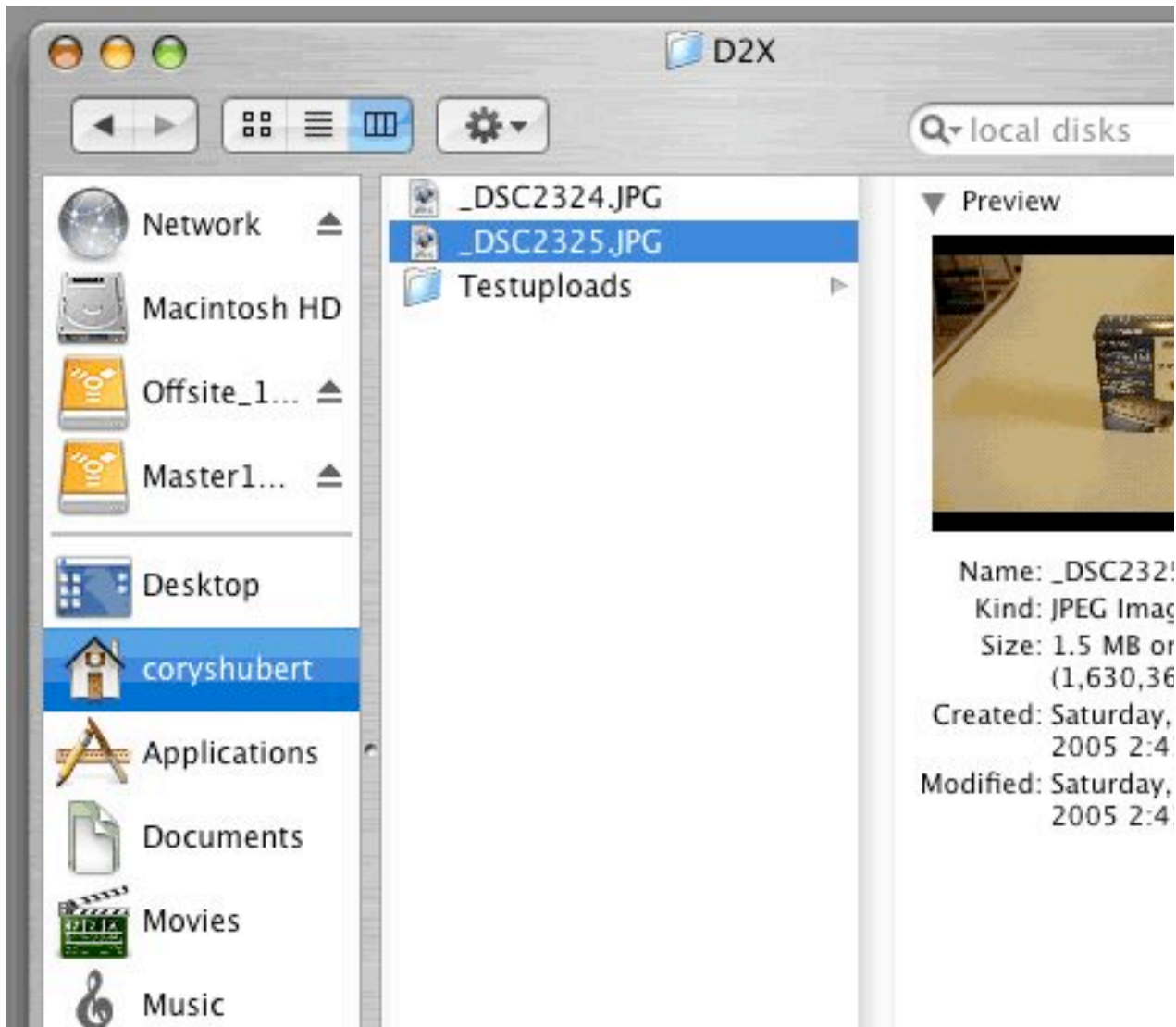
Nice...



This tells you the progress and how things are going. You have to switch it on to see this, but I just wanted to show you that you can see frames remaining as well as estimated time to upload the files in the queue. Below is the final path of my setting for the studio...



Here you can see that I also created a subfolder that I can organize the images per shoot



and here we see a shot uploaded

YOU DID IT.

See, it wasn't that bad.

The hardest part was remembering what the FTP server IP was, and once you had that, the rest was just going through the motions.

I went ahead and created a custom setup for my laptop, when out on location, as well as my studio. I decided for now to send low resolution JPGs to the computers and keep the NEF files on the CF card. The idea is to have something to show the client and not have to wait too long for the transfers. Then, I can download the NEFs later and run them through my processing.

Once setup, you can then go in under the SETTINGS menu and change things like what to upload, what to delete, etc.

The great thing is, it works and is pretty easy to set up compared to the WT-1. That was just a joke, plain and simple.

I hope this can help those of you trying to do this, and for those on a PC or with other system configurations who still can't get things to work, don't cry. It won't help...

Happy shooting,

Cory Shubert
www.pixelagogo.com